

# Operating Instructions

## #1206 Electric Focuser

For use with all LX3, LX5, LX6, LX100, and LX200 Schmidt-Cassegrain Telescopes

### ATTACHING THE ELECTRIC FOCUSER

1. Remove and discard the two screws (shown in Fig. 1) from the telescope's focuser flange (8, Fig. 2) using the smallest supplied hex wrench.
2. Slide the focuser mounting plate (6, Fig. 2), flat side up, over the telescope's focuser knob (7, Fig. 2) and secure in place using the two new 6-32 x 1/2" mounting screws (9, Fig. 2) supplied. Tighten these two screws firmly with the largest hex wrench supplied.
3. Slide the split-ring gear (5, Fig. 2) over the focuser knob. Place the small hex wrench between the gear and the mounting plate to hold the gear at the correct location. Lock the split-ring gear onto the focuser knob by tightening the screw with the medium-sized hex wrench supplied.
4. Place the gear cover (3, Fig. 2) over the focuser mounting plate and position it so that it sits flat on the mounting plate of the telescope. Thread in the two gear cover screws (4, Fig. 2) to lock the gear cover in place. Tighten these two screws firmly with the smallest hex wrench supplied.
5. Slide the motor assembly (1, Fig. 2) into the gear cover, aligning the slot at the bottom with the screw in the bottom. Rotate the motor assembly slightly to engage the two gears, if necessary.
6. Tighten the locking thumbscrew (2, Fig. 2) to hold the motor assembly in place.
7. Plug the Electric Focuser cord into the "Focuser" jack on the telescope's power panel.

### USING THE ELECTRIC FOCUSER

The Electric Focuser is operated by the telescope's handbox. Meade LX3, LX5, LX6, and LX100 model telescope handboxes have two dedicated "Focus" buttons which move the focus in and out. When using the LX200 handbox, hold the focus button and press the "PREV" or "NEXT" button at the same time.

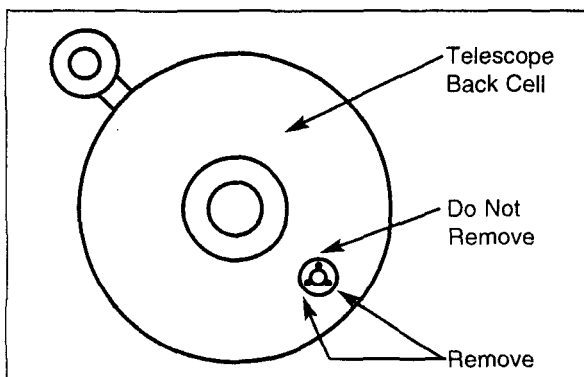


Fig. 1: Rear View of Telescope.

Meade LX6 Smartdrive, LX100 and LX200 model telescopes can operate the Electric Focuser at two speeds. The speed select slide switch on the handbox determines the focus speed.

*NOTE: In some battery operations, there may not be enough voltage for the slow speed to run — use the high speed only.*

The manual focus is available for large focus travel. Variations in manufacturing may require minor adjustment of the motor drive clutch nut, located on the underside of the motor assembly. Simply tighten the nut just enough that the motor will drive the focus mechanism.

### TELESCOPE STORAGE

Some telescope models require removal of the focuser when storing the telescope in its case. Simply unplug the cord, loosen the locking thumbscrew (2, Fig. 2) and remove the motor assembly. When replacing the motor assembly, start at step 5, above.

If you have any questions regarding the use of the #1206 Electric Focuser, call the Meade Instruments Customer Service Department at (949) 451-1450, or fax at (949) 451-1460. Customer Service hours are 8:30 AM to 4:30 PM, Pacific Time, Monday through Friday.

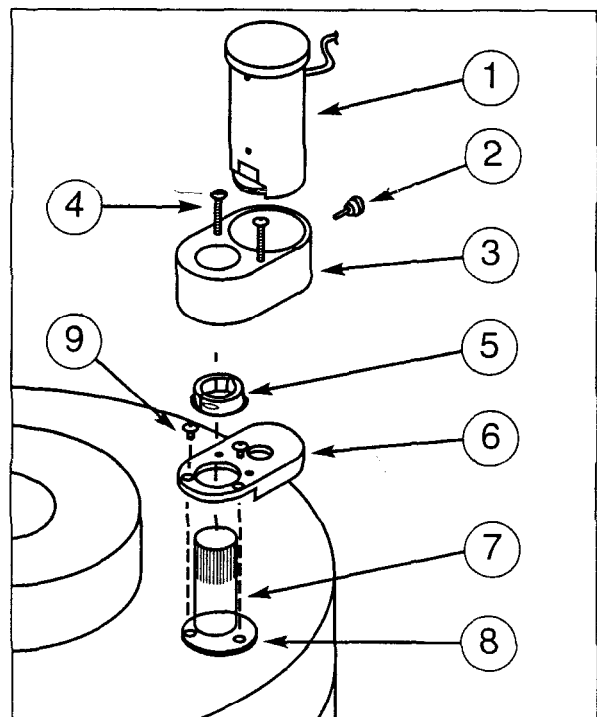


Fig. 2: Electric Focuser Parts. (1) Motor Assembly; (2) Locking Thumbscrew; (3) Gear Cover; (4) Gear Cover Screws; (5) Split-Ring Gear; (6) Focuser Mounting Plate; (7) Focuser Knob; (8) Focuser Flange; (9) Mounting Screws.



## Meade Instruments Corporation

World's leading manufacturer of astronomical telescopes for the serious amateur.

6001 OAK CANYON, IRVINE, CALIFORNIA 92612-5200 U.S.A.

(949) 451-1450 ■ FAX: (949) 451-1460 ■ [www.meade.com](http://www.meade.com)